



# TMN-01

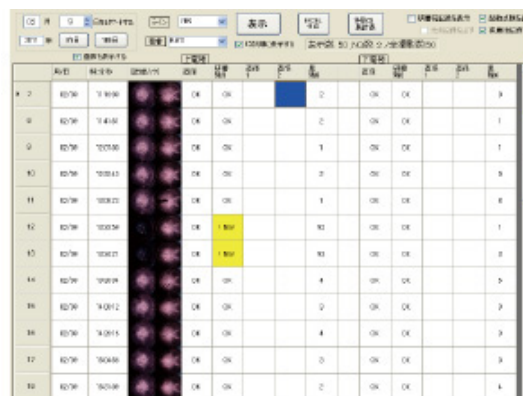
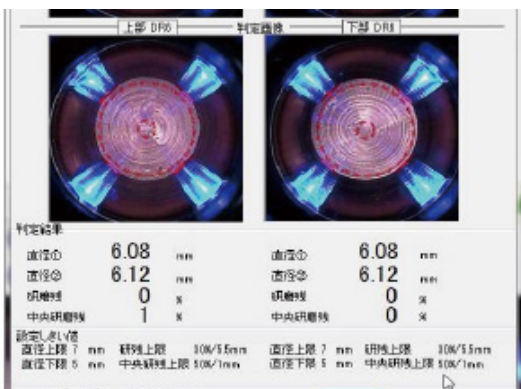
Joint Development with KEYLEX Co. Ltd.



## Features

- Automatic camera inspection of cap tip after dressing.
- Possible for image management using captured data.
- Image analysis of photographic data and automatic determination of chip condition.
- Analyzed data enables traceability.
- Compact body that does not interfere with line configuration.
- One-touch attachment bracket (Optional).
- Up to 15 DeviceNet or CC link devices and 50 ethernet devices can be connected to one computer.
- Controlled by DeviceNet, CC Link, or Ethernet TCP/IP.
- Supports control via Ethernet/IP.

## Software Pictures

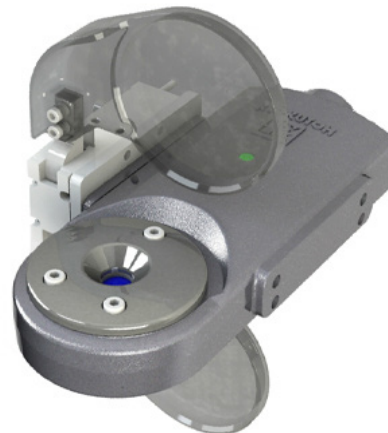


## Specifications

- Power: 48V (Supply from PoE hub)
- Consumed power: Less than 120mA
- Corresponds to TypeA, TypeB for PoE hub
- IP address setting (Changeable with software):  
Network transmission setting with software
- Operation temperature: Within 0~40 Celcius environment
- Operation humidity: Less than 90% (No bedewing)
- Weight: 780g
- Necessary equipment:
  - Computer, POE hub, I/F board for DeviceNet/CC link ONLY, LAN cable

\*There are some conditions for the supported PLC models.  
Please contact our sales department for details

## Option



Dustproof shutter